



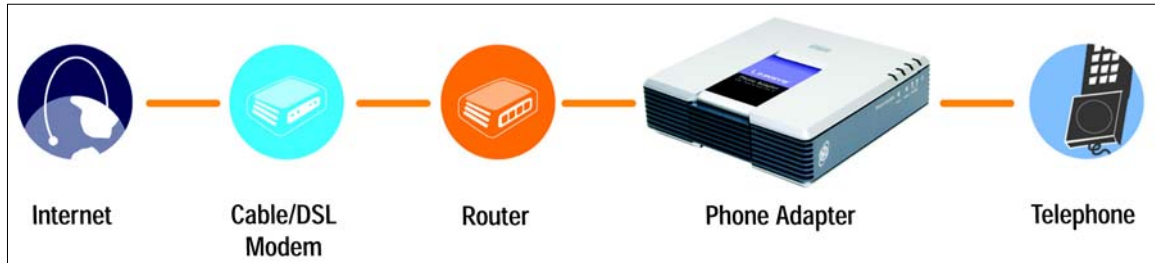
Linksys PAP2-NA Phone Adapter Configuration Instructions

Version 1.0

Configuration for Linksys Phone Adapter PAP2-NA

A. Physical connection

1. Connect the Phone Adapter as illustrated



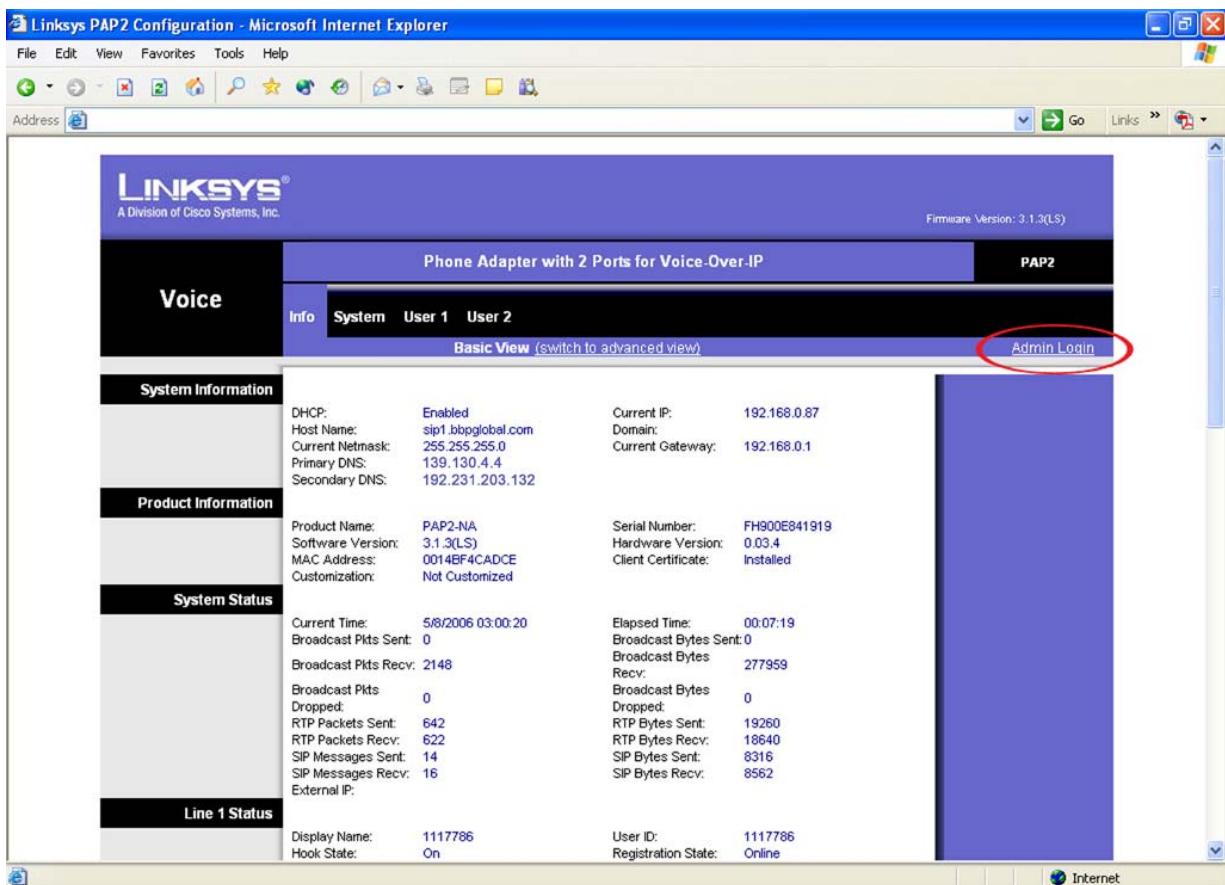
	<p>Connect a touch-tone phone to the phone adapter</p>
	<p>Connect the internet source (eg. Router or ADSL modem) into the Ethernet port of the phone adapter</p>
	<p>Connect the power source</p>

B. Enter the Configuration Menu

1. Look for IP Address of the phone adapter
 - Pick up the phone and type * * * * (star key x 4)
 - Type 110#
 - The IP address would be read out

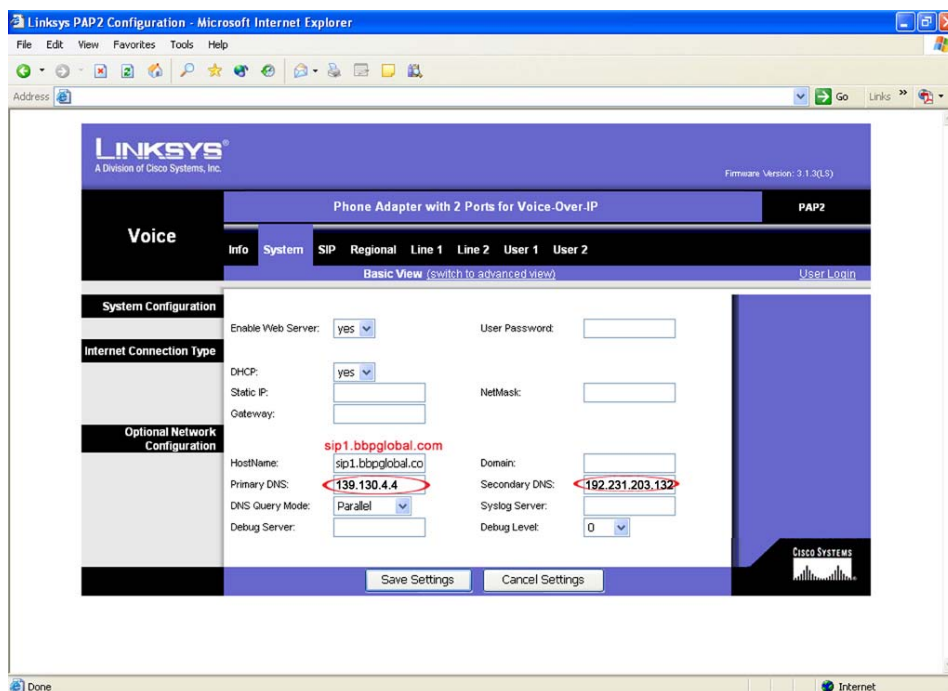
2. Type the IP address onto the address bar of Internet Explorer

3. Click “Admin Login” as illustrated



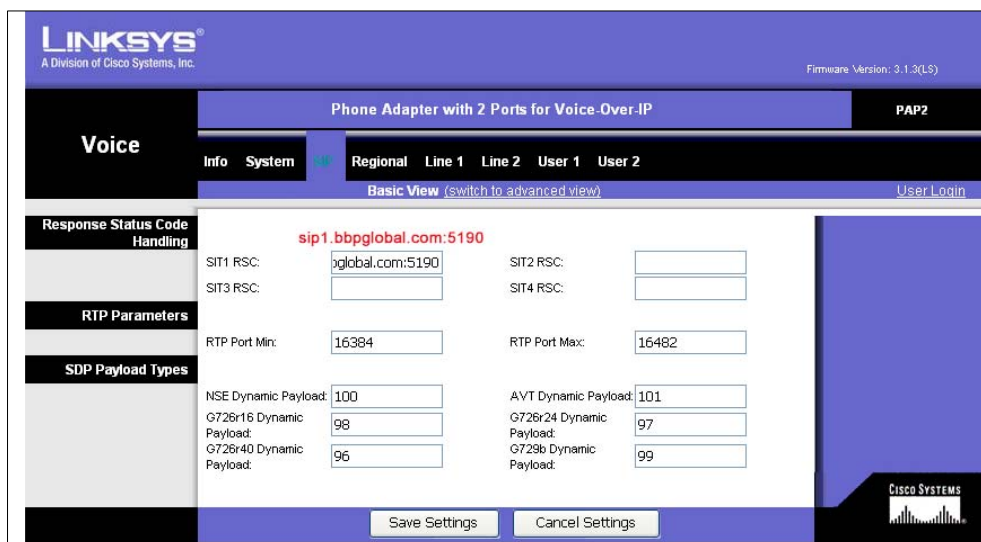
C. System Settings

1. Click on "System" Tab and enter the information as illustrated. Click "Save Settings" when done.



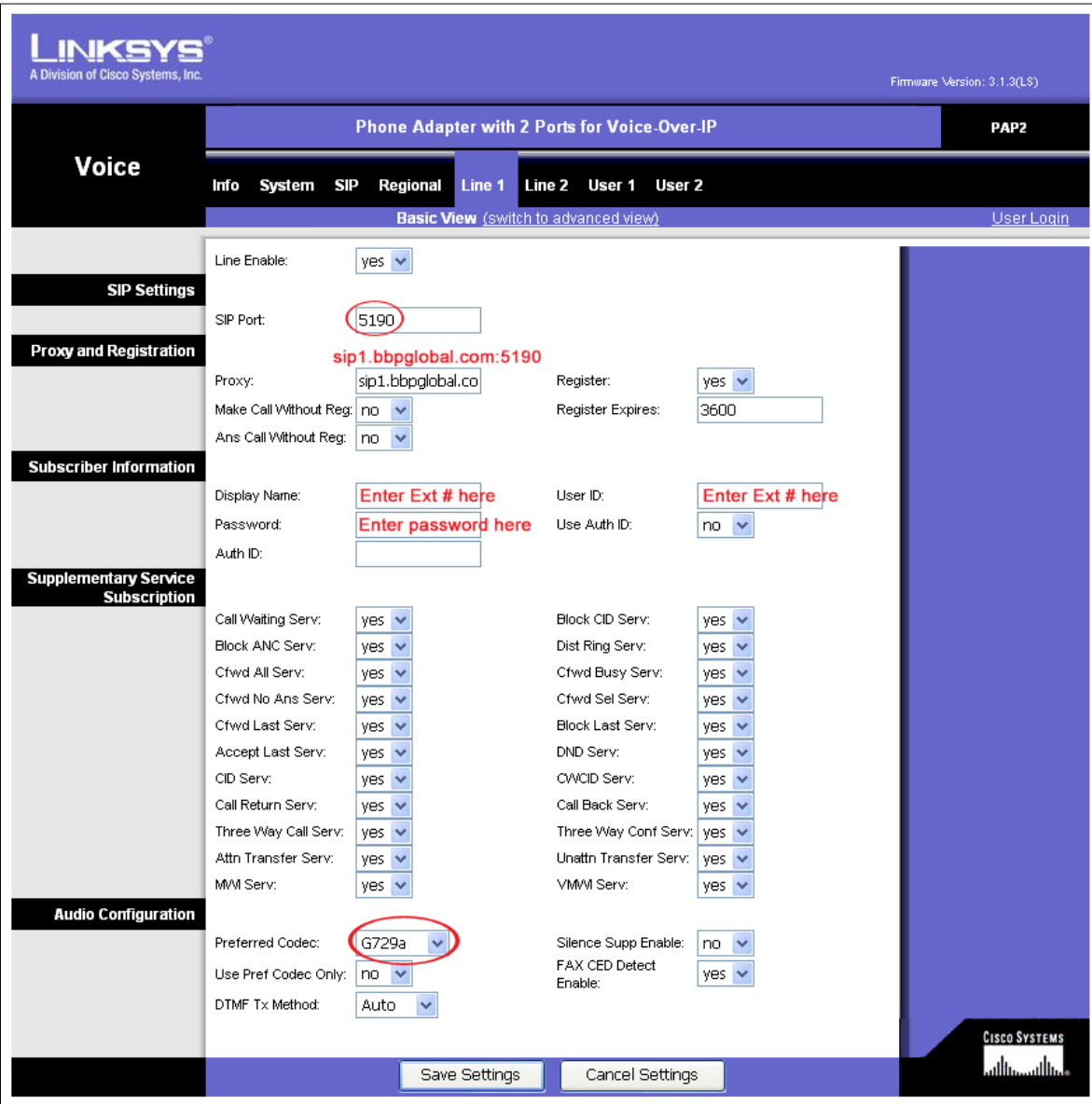
D. SIP Settings

1. Click on "SIP" Tab and enter the information as illustrated. Click "Save Settings" when done.



E. Configure Line 1 or 2

1. Click on "Line 1" Tab and enter the information as illustrated. Click "Save Settings" when done.



LINKSYS
A Division of Cisco Systems, Inc. Firmware Version: 3.1.3(LS)

Voice Phone Adapter with 2 Ports for Voice-Over-IP **PAP2**

Info System SIP Regional **Line 1** Line 2 User 1 User 2

Basic View (switch to advanced view) User Login

Line Enable: yes

SIP Settings
SIP Port:

Proxy and Registration
Proxy:
Register: yes
Make Call Without Reg: no
Register Expires:
Ans Call Without Reg: no

Subscriber Information
Display Name: User ID:
Password: Use Auth ID: no
Auth ID:

Supplementary Service Subscription
Call Waiting Serv: yes
Block ANC Serv: yes
Cfwd All Serv: yes
Cfwd No Ans Serv: yes
Cfwd Last Serv: yes
Accept Last Serv: yes
CID Serv: yes
Call Return Serv: yes
Three Way Call Serv: yes
Attn Transfer Serv: yes
MMI Serv: yes
Block CID Serv: yes
Dist Ring Serv: yes
Cfwd Busy Serv: yes
Cfwd Sel Serv: yes
Block Last Serv: yes
DND Serv: yes
CWCID Serv: yes
Call Back Serv: yes
Three Way Conf Serv: yes
Unattn Transfer Serv: yes
VMMI Serv: yes

Audio Configuration
Preferred Codec:
Use Pref Codec Only: no
DTMF Tx Method:
Silence Supp Enable: no
FAX CED Detect Enable: yes

CISCO SYSTEMS

NB: Port number of sip2.bbpglobal.com is 5060.