



BBPGlobal Setup Guide for X-Lite

Version 2.0

Setup Guide for X-Lite

A. Installing X-Lite

Windows	Macintosh
<ol style="list-style-type: none"> 1. Exit any software applications that use sound such as CD and media players. 2. Run the setup executable file. This will typically be the X-Lite_Install.exe file (or something similar). Note: If you have a version of an Xten softphone already running you will be asked to shut it down. 3. Follow the prompts offered by the install wizard. Note: You must accept the license agreement to install X-Lite. 4. Select Launch X-Lite at the final step of the wizard to start using the softphone. 5. Click Finish to complete the installation. 	<ol style="list-style-type: none"> 1. The download file is an internet-enabled disk image; therefore most browsers should mount it automatically. However, if this is not the case, locate the .dmg file after download and double-click on it. 2. Read the license agreement and click "Agree" to proceed. Note that you must agree to the terms of the license agreement to install X- Lite for Macintosh. 3. Simply drag the application icon to the folder in which you wish to install. This will normally be your Applications folder. If you do not have permission to install to the Applications folder you will most likely want to install to your home folder instead.

B. Running X-Lite

Windows	Macintosh
<ol style="list-style-type: none"> 1. Click the Start button. 2. Select Programs. 3. Select the folder labeled X-Lite (or whatever you choose as the Start menu Folder during the installation) 4. Select X- Lite. 	<ol style="list-style-type: none"> 1. Open the folder where you installed X-Lite, usually in Drive / Applications. 2. Double-click the application icon.

C. Audio Tuning

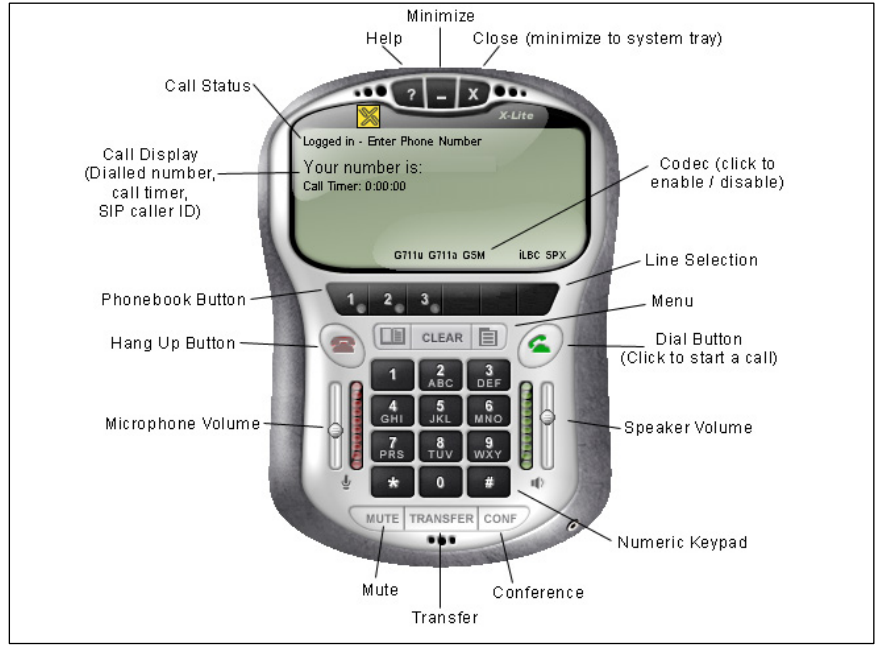
Since X- Lite is a software telephone application, you will require both speaker and microphone devices to make calls. Any of the following configurations are acceptable:

- External speakers and microphone (requires a full-duplex sound adapter)
- Dual-jack multimedia headset (requires a full-duplex sound adapter)
- Built in microphone and speakers (requires a full-duplex sound adapter)
- USB multimedia headset
- USB phone

When X-Lite runs for the first time, it will open the Audio Tuning Wizard. It is strongly advised that you complete the wizard to make sure that your audio devices are working properly and are set at the right level.

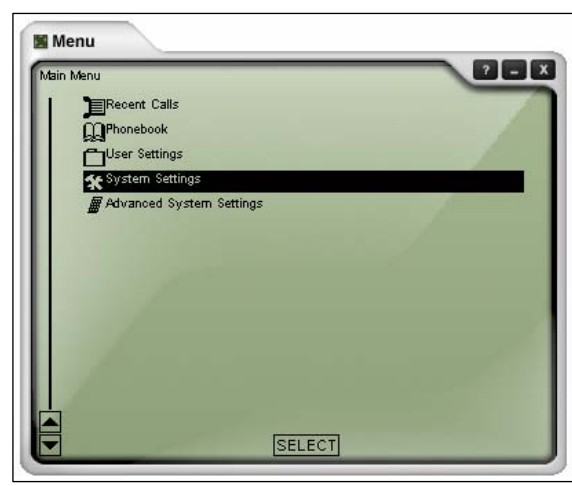
Click Next to begin the wizard and follow the steps to complete your audio device calibration. If you cannot complete the wizard successfully, check to make sure that our devices are plugged in and are working properly for other applications that employ audio.

D. User Interface



E. Configuration

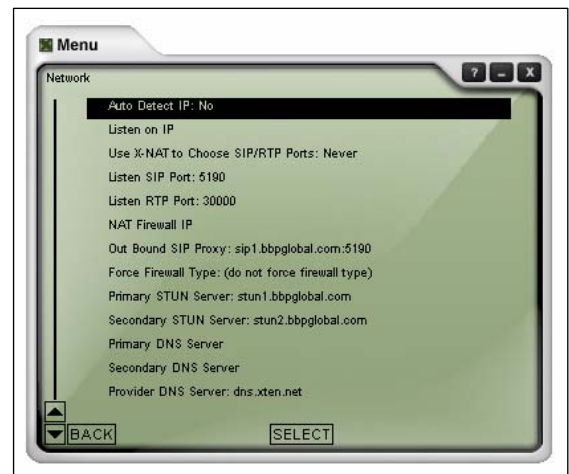
1. Press the menu button (next to the green dial button).
2. Double Click "System Settings".



3. Double Click “Network”.

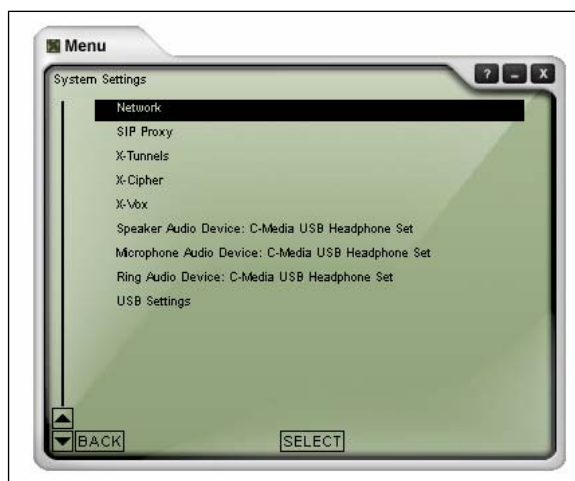


4. Input the following into the fields:
 (Click down arrow to scroll if required)
 Listen SIP Port: 5190
 Listen RTP Port: 30000
 Out Bound SIP Proxy: sip1.bbpglobal.com:5190
 Primary STUN Server: stun1.bbpglobal.com
 Secondary STUN Server: stun2.bbpglobal.com



5. Click “Back”

6. Double click “SIP Proxy”



7. Double Click "Default"
8. Enter the following:
(Click down arrow to scroll if required)
Enabled: Yes
Display Name: *(Your BBPGlobal extension)*
Username: *(Your BBPGlobal extension)*
Authorization User: *(Your BBPGlobal extension)*
Password: *(Your password)*
Domain / Realm: sip1.bbpglobal.com
SIP Proxy: sip1.bbpglobal.com:5190
9. Click "x" on the top right hand corner to close the settings page.
10. You may now start to make phone calls.

