



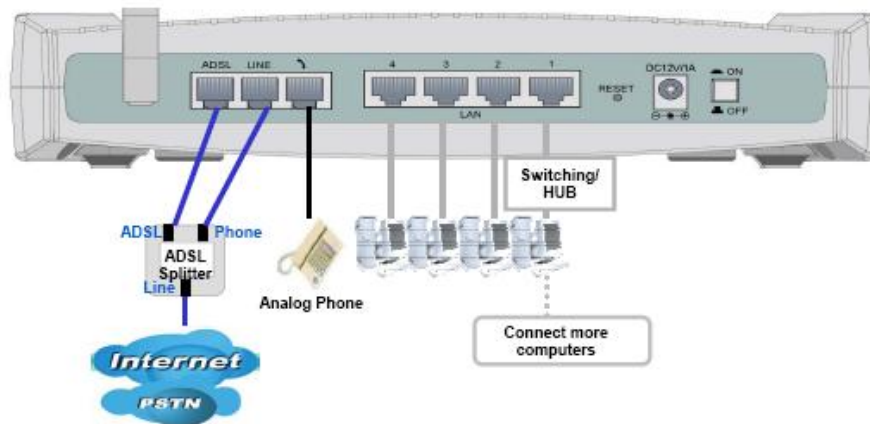
BBPGlobal
Add voice to your internet

Billion BIPAC 7401VP VoIP ADSL2/2+ Modem Router Configuration Instructions

Version 1.0

A. Physical Connection

1. Connect the device as illustrated



B. VoIP Settings

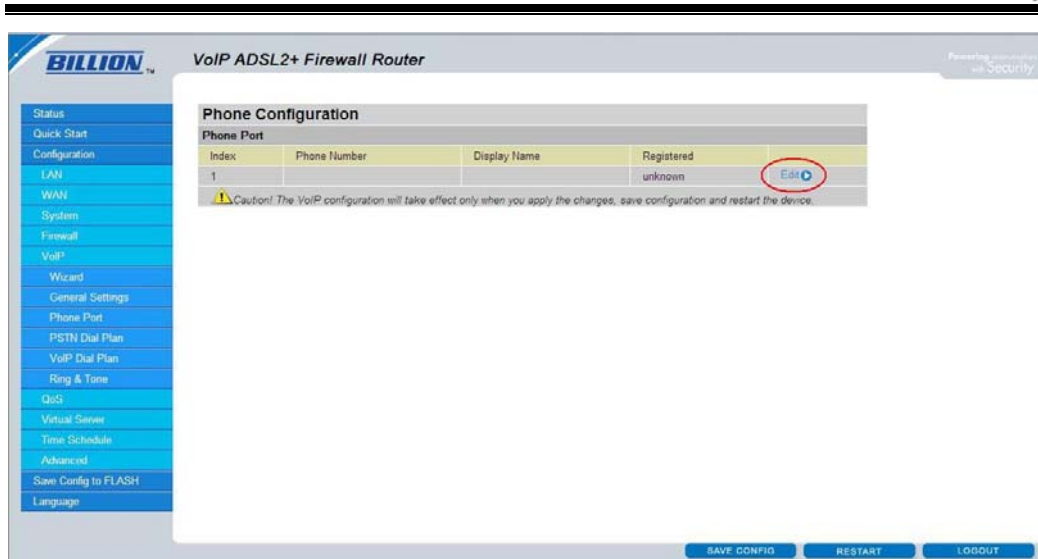
1. Type 192.168.1.254 onto the address bar of Internet Explorer
2. Enter in login username & password:
Username: admin
Password: admin
3. Go to “Configuration” page, then click on “VoIP”
4. Go to “General Settings” page
5. Input the information as illustrated

SIP Device Parameters	
SIP	<input checked="" type="radio"/> Enable <input type="radio"/> Disable
Silence Suppression (VAD)	<input checked="" type="radio"/> Enable <input type="radio"/> Disable
Echo Cancellation	<input checked="" type="radio"/> Enable <input type="radio"/> Disable
RTP Port	5100
Region	Australia
Voice QoS	Premium

Setting for Phone Port 1	
Registrar Address(or Hostname)	sip2.bbpglobal.com
Registrar Port	5060
Expire	300 seconds
User Domain/Realm	(if empty, it is the same as Registrar Address.)
Outbound Proxy Address	(if empty, it is the same as Registrar Address.)
Outbound Proxy Port	5060

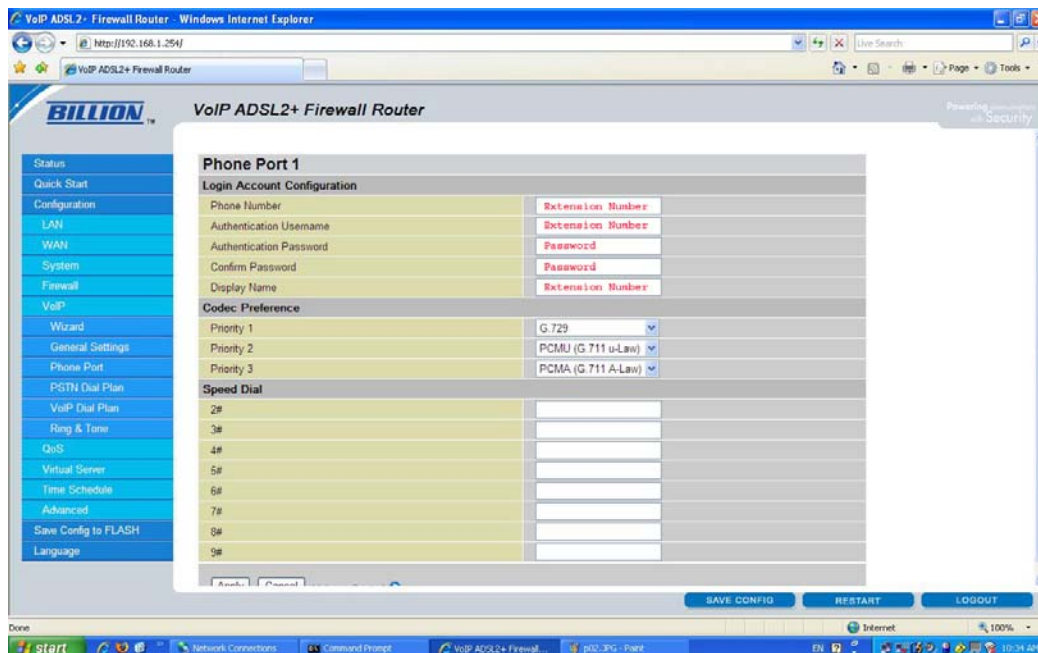
Please note: VoIP configuration changes will only take effect when you use apply changes and select Sync Now for the relevant line, or when you apply changes, save configuration and restart the device.

6. Click “Apply”, then click “SAVE CONFIG”
7. Go to “Phone Port” page



8. Click "Edit"

9. Enter your BBPGlobal extension number and password as illustrated



10. Click "Apply", then click "SAVE CONFIG"

11. Go to "VoIP Dial Plan"

12. Select the options as illustrated

BILLION™ VoIP ADSL2+ Firewall Router Powering your network with Security

- Status
- Quick Start
- Configuration
- LAN
- WAN
- System
- Firewall
- VoIP
- Wizard
- General Settings
- Phone Port
- PSTN Dial Plan
- VoIP Dial Plan
- Ring & Tone
- QoS
- Virtual Server
- Time Schedule
- Advanced
- Save Config to FLASH
- Language

VoIP Dial Plan 1

Parameters

<input checked="" type="checkbox"/> *69 Return Call
<input checked="" type="checkbox"/> *20 enable 'Don't Disturb' / *80 disable 'Don't Disturb'
<input checked="" type="checkbox"/> *90x Blind Call Transfer
<input checked="" type="checkbox"/> x# Speed Dial (x: 2-9)
<input checked="" type="checkbox"/> ## Redial
<input checked="" type="checkbox"/> *74<x><number># Set the number of Speed Dial Code <x> (x: 2-9)
<input checked="" type="checkbox"/> Phone number +#(pound key) Immediate Call Out Service

Dial Plan Rules List

Rule Name	
x.T	<input type="button" value="Delete"/>

13. Click “Apply”, then click “SAVE CONFIG”